



Maeda MC-104C Technical specifications

Specification

Model	MC-104CR(CER)
Crane capacity	995kg x 1.1m
Max. working radius	5.10m
Max. lifting height	Approx 5.5m
Hook speed	4.0m / min (4 falls)
Single line speed	16.0m / min (4th layer)
Wire rope	IWRC 6 x Fi (29) φ 6mm x 39m
Telescopic system:	
Boom length	1.85m~5.30m
Telescoping speed	3.45m / 14 sec .
Boom type	Fully automatic 4-section pentgonal telescopic boom
Derricking angle / time	0~75° / 12 sec
Slewing angle / time	360°continuous / 1.8 rpm
Outtrigger system	4 Multi position box type with lock valves
Traction system:	
Drive	Hydrostatic type, stepless forward and reverse
Travel speed	0~2.4km/h
Gradability	20°
Crawler ground length	1044mm
Ground pressure	0.29kg/cm ²
Crawler width	180mm

Engine:

MC104CR - Petrol	Kubota GH280-E-GCLSY-ME1
Type	One-cylinder air cooled 4-stroke petrol engine
Max. output	4.9 Kw / 1800rpm
Starting method	Electric and recoil
Fuel	Petrol
Fuel tank capacity	6L
MC104CR - electric	5A-EB434-01Mitsubishi Fully enclosed fan cooled motor
Type	5.5 kW 4P 400V

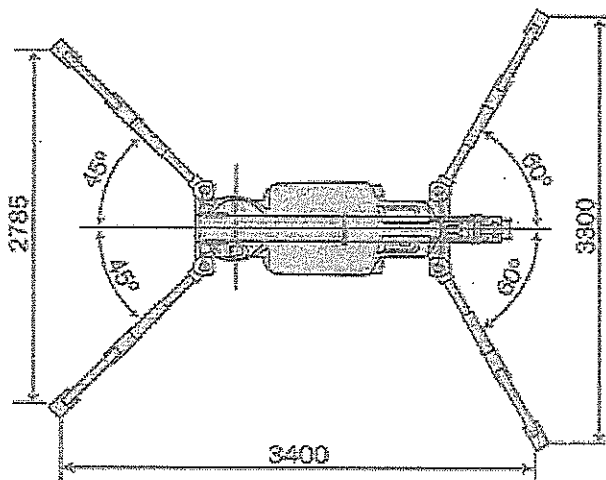
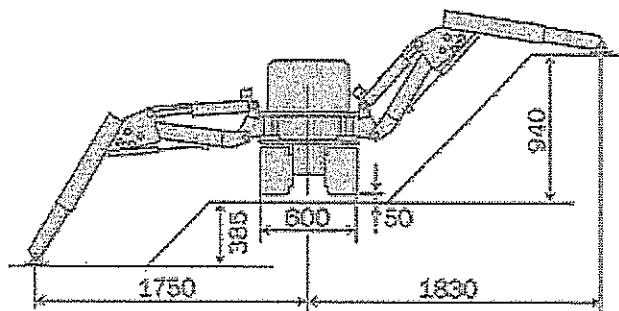
Size & Dimensions:

Length x Width x Height	
MC104CR	1980mm x 600mm x 1305mm
Length x Width x Height	
MC104CER	2180mm x 600mm x 1305mm
Weight MC104CR	1050 kg
Weight MC104CER	1050 kg

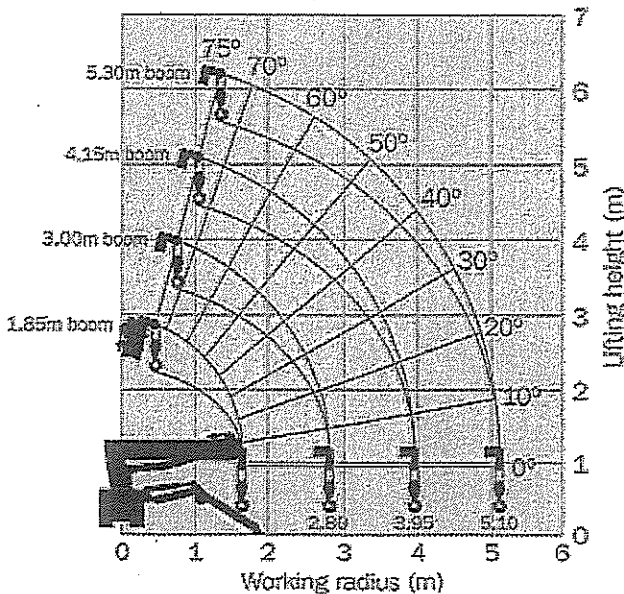
Standard equipment:

- Remote control
- Working light
- Hour-meter
- 4-fall hook block
- Black rubber tracks

Technical Drawing



Working range chart



Optional equipment:
 White rubber tracks
 Single fall hook
 Two fall hook
 Loadwise safe indicator
 Wireless radio remote control

The working range chart applies to cases without load and does not include boom deflections.

For further details please contact Kranlyft UK.

Due to improvements, the specifications are subject to change without notice.

Total rated load (Outriggers at maximum position)

1.85 boom		3.00 boom		4.15 boom		5.30 boom	
Working radius (m)	Total rated load (kg)	Working radius (m)	Total rated load (kg)	Working radius (m)	Total rated load (kg)	Working radius (m)	Total rated load (kg)
< 1.1	995	< 1.1	995	< 1.8	820	< 2.4	650
1.3	980	1.3	980	2.0	750	2.5	620
1.5	890	1.5	890	2.5	620	2.8	550
1.65	790	2.0	750	2.8	550	3.0	500
		2.5	620	3.0	500	3.5	380
		2.8	550	3.5	380	4.0	300
				3.95	300	4.5	250
						5.1	200

Based on actual working radius that takes into account boom deflections under load. Includes 15kg of Hook Block.



Info@kranlyft.com
www.maedacranes.com