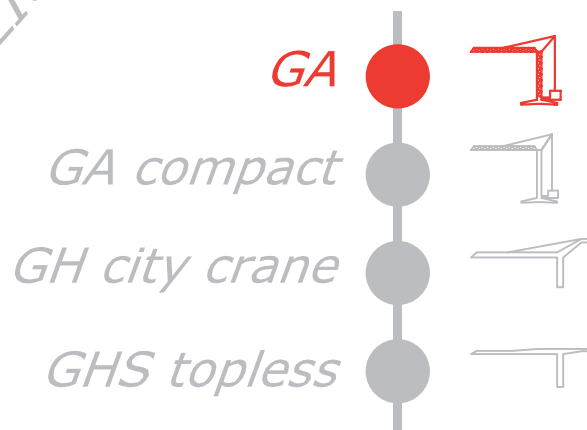


# GRU A TORRE

# GA 133

GRU AUTOMATICA CON  
MONTAGGIO IDRAULICO



*FB F.lli Butti s.r.l.*

*Via XXV Aprile, 58*

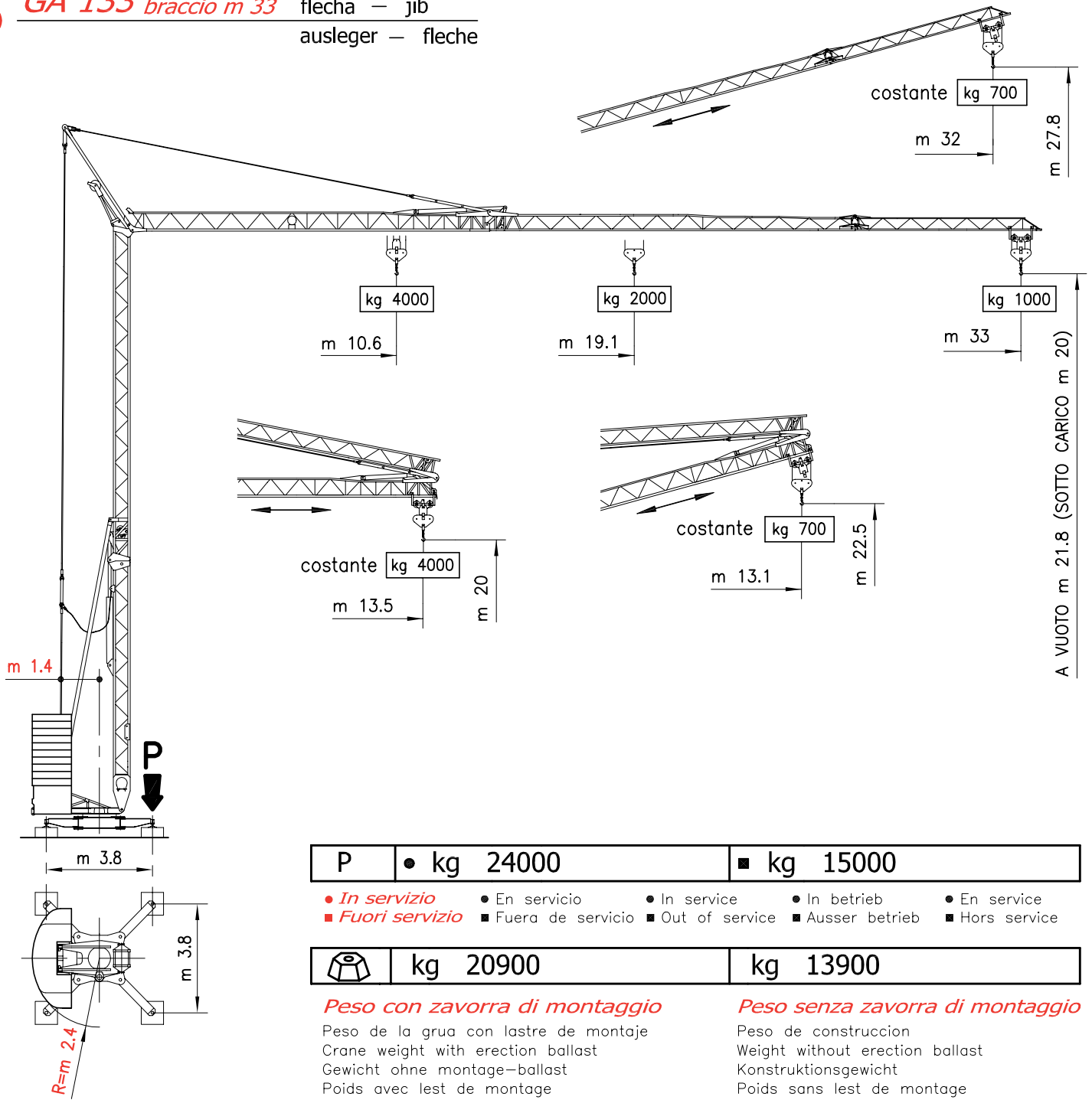
*23868 Valmadrera (LC) - ITALIA*

*Tel. 0341.581108 - Fax 0341.200253*

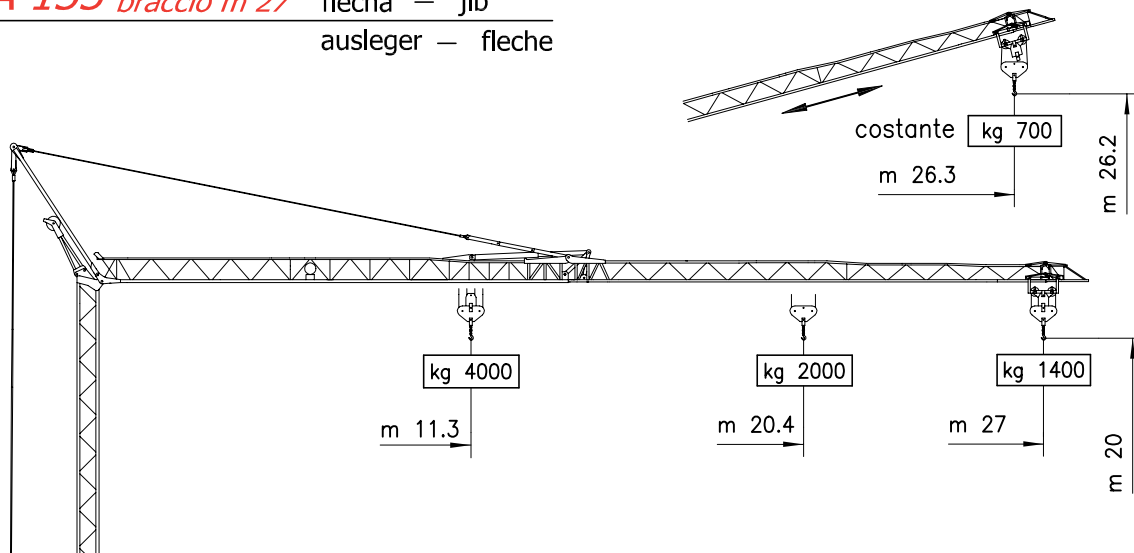
*E-mail : fbgru@fbgru.it - <http://www.fbgru.it>*



**GA 133 braccio m 33** flecha — jib  
ausleger — fleche




**GA 133 braccio m 27** flecha — jib  
ausleger — fleche




# MECCANISMI

MECANISMOS — MECHANISMS  
ANTRIEBE — MÉCANISMES

<b>MOVIMENTO</b> MOVIMIENTO MOVEMENT BEWEGUNG MOUVEMENT	<b>ALIMENTAZIONE</b> ALIMENTACION OPERATING VOLTAGE BETRIEBSSPANNUNG TENSION DE SERVICE	<b>PRESTAZIONI</b> FUNCIONAMIENTOS PERFORMANCES LEISTUNGEN EXÉCUTIONS	<b>POTENZA NECESSARIA</b> POTENCIA NECESARIA POWER REQUIREMENT KRAFT DARF PUISSANCE NÉCESSAIRE
---	---	---	--

<b>SOLLEVAMENTO</b> ELEVACION — HOISTING HEBEN — LEVAGE    <b>INVERTER</b>	400 V 50 Hz	▷ m/1' - kg	▷▷ m/1' - kg	▷▷▷ m/1' - kg	kW 9.2
		II 5 ↓↑	II 26 ↑   II 27 ↓	II 40 ↑   II 42 ↓	
		2000	2000	1000	
		IV 3 ↓↑	IV 13 ↑   IV 14 ↓	IV 20 ↑   IV 21 ↓	
4000	4000	2000			

<b>CARRELLO</b> CARRILLO — JIB TROLLEY LAUFKATZE — DISTRIBUTION    <b>INVERTER</b>	400 V 50 Hz	▷ m/1'	▷▷ m/1'	kW 2.2
		17	46	

<b>ROTAZIONE</b> ROTACION — SLEWING DREHEN — ORIENTATION    <b>INVERTER</b>	400 V 50 Hz	▷ m/1'	▷▷ m/1'	kW 3
		0 → 0.15	0.15 → 0.8	



Conforme alle direttive  
CEE sul livello acustico  
2000/14/CE

Conforme con las directivas  
CEE sobre el nivel acustico

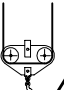

In compliance with the EEC  
instructions on noise levell

Gemass EWG-Richtlinien für  
den Schall-Leistungspegel

Conforme aux directives CEE  
sur le niveau acoustique

## CURVE DI CARICO


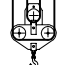
CURVAS DE CARGAS — LOAD DIAGRAMS  
LASTKURVEN — COURBES DE CHARGES

<b>II</b>   <b>IV</b> 	m	10.6	11.3	14	16	18	19.1	20.4	22	24	26	27	28	30	32	33	
	kg	IV	IV	IV	IV	IV	II	II	II	II	II	II	II	II	II	II	II
		4000	3598	2904	2478	2154	2000	1823	1691	1521	1378	1305	1256	1151	1060	1000	
		IV	IV	IV	IV	IV	II	II	II	II	II	II					
4000	3128	2672	2324	2178	2000	1829	1647	1494	1400								

<b>BRACCIO IMPENNATO</b> FLECHA IZADA LUFFING JIB AUSLEGER IN STEILSTELLUNG FLÈCHE RELEVÉE	↔	<b>Carrellino distributore</b> Carrellino distribuidor — Traversing trolley Verfahrbare laufkatze — Chariot distributeur	<b>kg 700</b>
--	---	--	---------------

## POTENZA RICHIESTA

POTENCIA-ELECTRICA NECESARIA — NECESSARY ELECTRIC POWER  
KRAFTBEDARF — PUISSANCE ELECTRIQUE NÉCESSAIRE

<b>ALIMENTAZIONE TRIFASE</b> TRIFASICA THREE PHASE DREIPHASIGE TRIPHASE	<b>15 kw</b>	400 V - 50 Hz	<b>SOLLEVAMENTO</b> ELEVACION HOISTING HEBEN LEVAGE	<b>II</b>  <b>kg 2000</b>  <b>IV</b>  <b>kg 4000</b>
---	--------------	---------------	---	--

Con riserva di modifiche

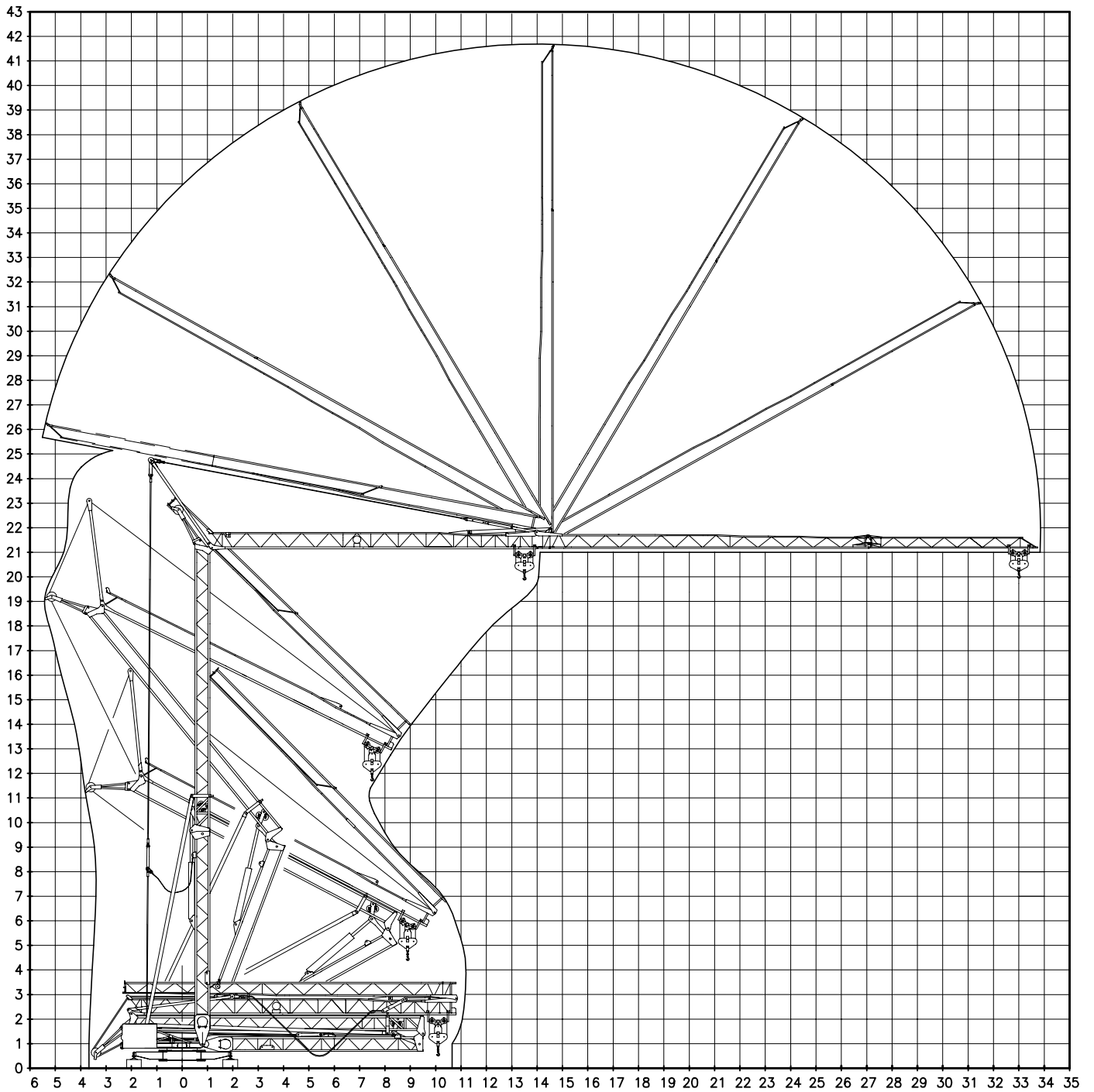
Derecho de modificaciones reservadas

Subject to change without notice

Änderungen vorbehalten

Modifications réservées

**MONTAGGIO** MONTAJE — ERECTION  
MONTAGE — MONTAGE



**TRASPORTO** TRANSPORTE — TRANSPORT  
TRANSPORT — TRANSPORT

