



## SAFE-USE



**Power-Pad MOD Lite**



	LOAD CAPACITY (TONNES)	WEIGHT (KGS)
1500x400x100 (mm)	<b>60</b>	<b>29</b>
2500x400x100 (mm)	<b>60</b>	<b>49</b>

## WLL: 60 TON CAPACITY

Single load rating for all setups of our certified Power-Pad Mod Lite system.



## LIGHTWEIGHT CONSTRUCTION

Made out of high grade aluminium weighing from 29 kg per pad.  
Easy to assemble.



## INTERLOCKING SYSTEM

Increased support, reducing movement of the modular system.  
Designed and manufactured in the UK.



## MOD LITE FEATURES

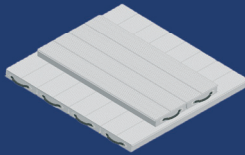
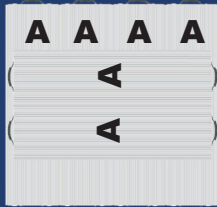
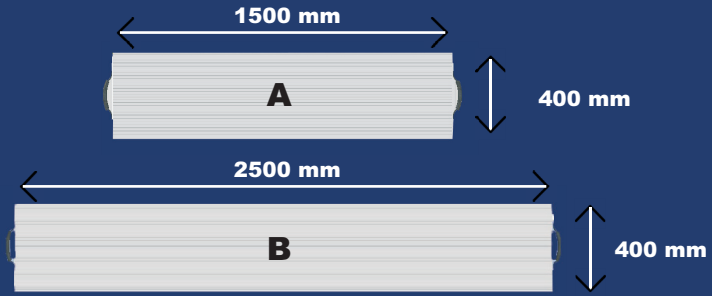
Each Pad:

- Fitted with two certified handles
- Individually marked:  
Serial number  
WLL  
Tare weight



# Setups

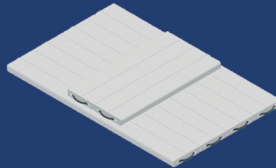
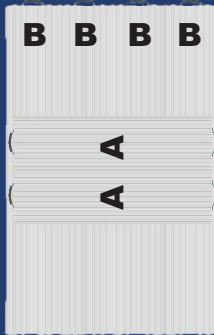
## *Power-Pad Mod Lite*



### Configuration 1

**2.4m<sup>2</sup>**

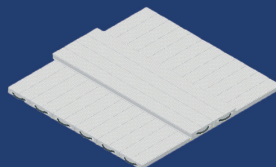
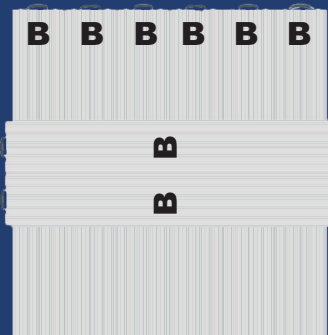
1600x1500 (mm)  
WLL: 60 Ton capacity  
Total weight: 174 Kg



### Configuration 2

**4m<sup>2</sup>**

2500x1600 (mm)  
WLL: 60 Ton capacity  
Total weight: 254 Kg



### Configuration 3

**6m<sup>2</sup>**

2400x2500 (mm)  
WLL: 60 Ton capacity  
Total weight: 392 Kg